

SOURCE REDUCTION

Eliminate the standing water in:

- Gutters & rain barrels
- Boats & tarps
- Cans, bottles, & plastics
- Flower pots & vases
- Unused swimming pools
- Wheel barrows & tubs
- Ornamental pools
- Cellars & crawl spaces
- Tires
- Recycling containers

Change water in birdbaths
weekly

Disposed of tires and trash in
environmentally-acceptable
ways!

Contact Information

Vector Control Coordinator: Ryan Baldwin

1 Quaker Plaza, Room 106.

Stroudsburg PA 18360

Phone: (570) 517-3416

Email: rbaldwin@monroecountypa.gov

Monroe County Vector Control

West Nile Virus Program

- Identification
- Life Cycle
- Breeding Habitats
- West Nile Virus
- Prevention
- When to Contact Monroe County
Vector Control

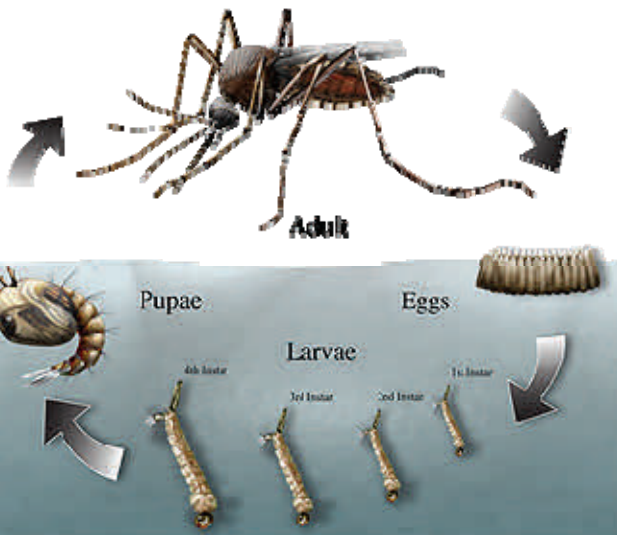


Identification

Identification of a mosquito is simple when using their overall appearance. However, other flying insects are often confused with mosquitoes, such as crane flies. Mosquitoes are small, two winged flying insects that require blood meals to reproduce. Here, in Monroe County, you will mostly see pale yellow, brown, and black/white colored mosquitoes, these colors vary depending on species. Mosquitoes have a needle like mouth part known as a proboscis and generally grow no larger than half an inch.

Life Cycle

Eggs are laid on or near water, where they will hatch into larvae. Each larvae will grow rapidly into a pupae – the “cocoon” stage where wings and legs develop. Soon, the adult emerges, who will look for a blood meal and return to the water source to lay her eggs to start the cycle all over again.



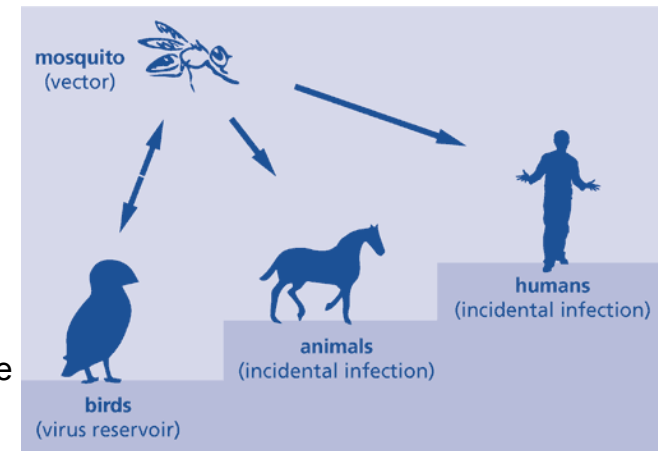
Breeding Habitats

Any natural or artificial container that is able to hold standing water can become a breeding ground for mosquitoes. These containers should be emptied as often as possible; in the case of a birdbath, the water should be replaced at least once per week. Keep in mind that mosquitoes can lay an egg raft (100-300 eggs) in a bottle cap of water. If not able to be emptied, bacterial treatments can be used to limit breeding. (Additional habitats on back)



West Nile Virus

West Nile virus is a mosquito-borne disease that can cause encephalitis, a brain inflammation. In 1999 West Nile virus was first detected in North America, and in Pennsylvania in 2000. In Pennsylvania, West Nile virus cases occur primarily during the mid summer months into the early fall. Infected mosquitoes pass the virus onto birds, humans, and other animals.



Prevention

Removal of mosquito breeding habitats is the best method used in reducing any possible WNV risk. In addition to this there are several other methods involving alterations to the surrounding environment. These include:

- Bacterial agents
- Chemical agents
- Bat boxes
- Larvivorous fish
- Plants with known repelling properties
- Keeping grass and brush low cut



When To Contact Monroe County Vector Control

It is best to contact MCVC when large adult or larval populations are present in your area. MCVC can set traps to assess the severity and provide answers to possible sources and solutions. Collected samples may then be tested for viruses such as WNV; dependent upon the species present.